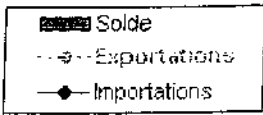


### 3 - Monsieur Wilfried ROGE

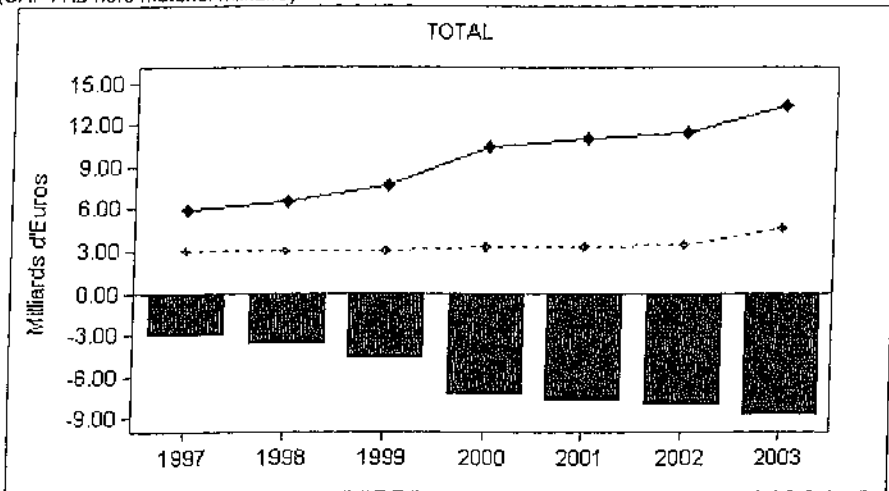
## Echanges commerciaux France -/ Chine

(Evolution annuelle de 1997 à 2003)

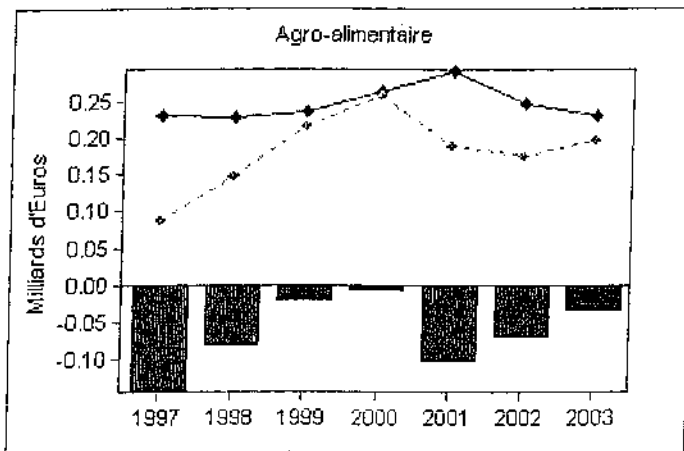


Total

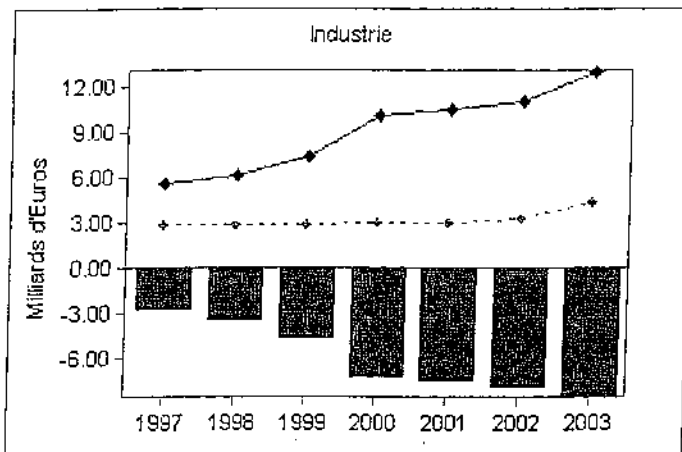
(CAF FAB hors matériel militaire)



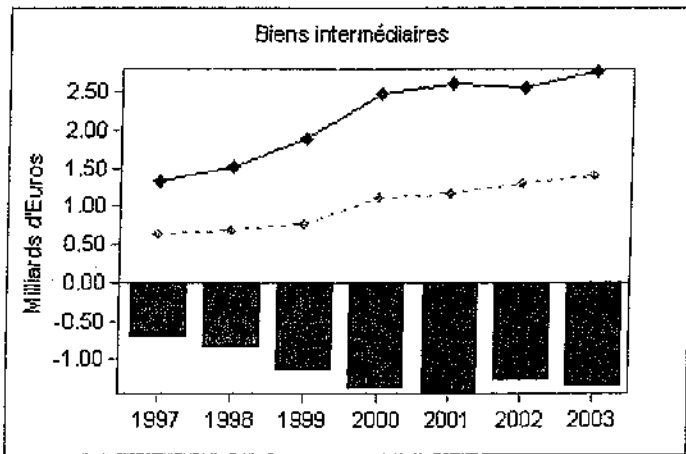
AGRO-ALIMENTAIRE



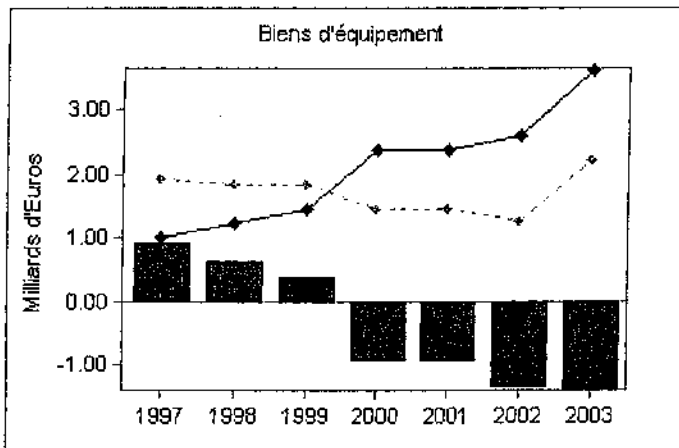
INDUSTRIE



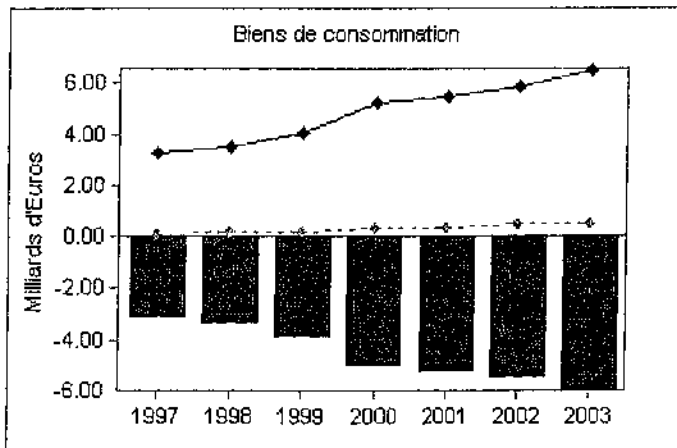
Biens intermédiaires



Biens d'équipement



Biens de consommation



Industrie automobile

